

Vicinity Map

Oil Dock 14 (SWG-2013-00922) Permit Modification Request
Corpus Christi Ship Channel, Corpus Christi,
Nueces County, Texas

Prepared By:

Triton Environmental Solutions, LLC
P.O. Box 1755
Rockport, Texas 78381

Prepared For:

Port of Corpus Christi Authority
400 Harbor Drive
Corpus Christi, Texas 78401

Map Notes:

For planning and permitting only, not for construction.
Base Map Source: ESRI USGS National Map base imagery.
Map Preparation Date: 12/18/24 (SP).



Proposed Modifications Overview 1

Oil Dock 14 (SWG-2013-00922) Permit Modification Request
Corpus Christi Ship Channel, Corpus Christi, Nueces County, Texas

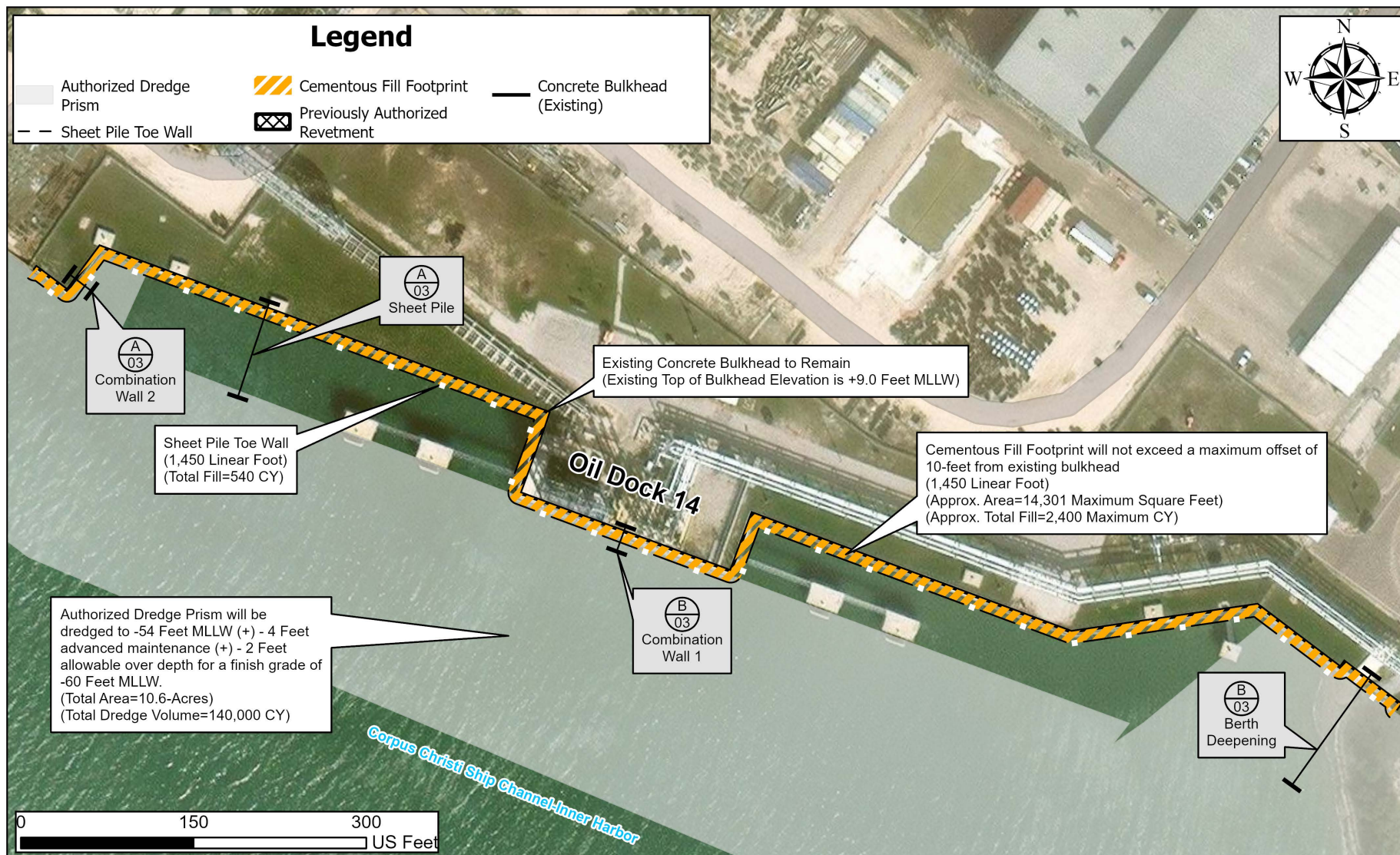
Prepared By:

Triton Environmental Solutions, LLC
P.O. Box 1755
Rockport, Texas 78381

Prepared For:

Port of Corpus Christi Authority
400 Harbor Drive
Corpus Christi, Texas 78401

Map Notes:
For planning and permitting only, not for construction.
Base Map Source: ESRI Hybrid basemap imagery.
Dredging Footprint & Revetment features georeferenced from project ENG plans.
Map Preparation Date: 12/18/24 (SP).



Proposed Modifications Overview 2

Oil Dock 14 (SWG-2013-00922) Permit Modification Request
Corpus Christi Ship Channel, Corpus Christi, Nueces County, Texas

Prepared By:

Triton Environmental Solutions, LLC
P.O. Box 1755
Rockport, Texas 78381

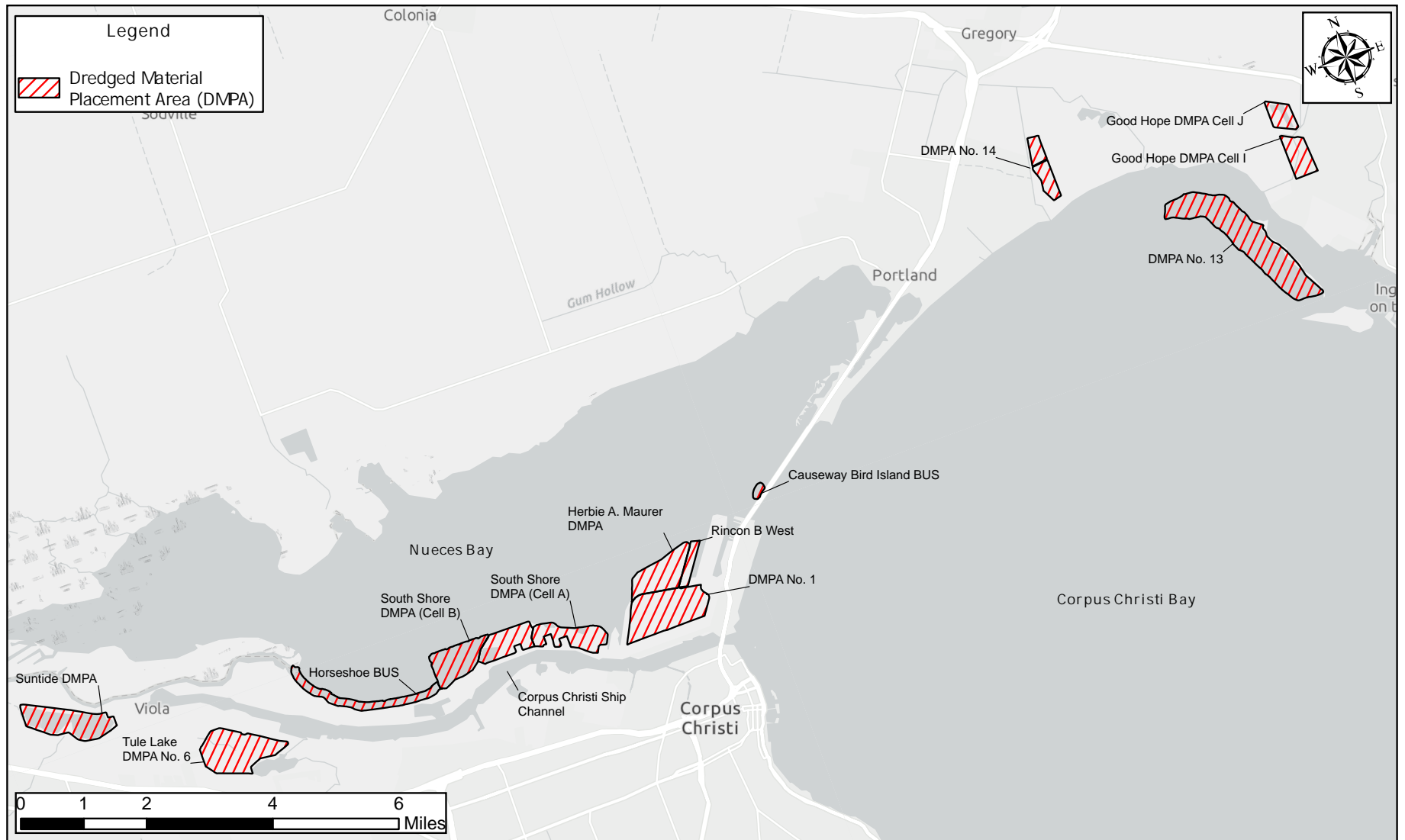


Prepared For:

Port of Corpus Christi Authority
400 Harbor Drive
Corpus Christi, Texas 78401

Map Notes:

For planning and permitting only, not for construction.
Base Map Source: ESRI Hybrid basemap imagery.
Dredging Area feature georeferenced from project ENG plans.
Section locations are approximate.
Map Preparation Date: 12/18/24 (SP).



DMPA Site Plan

Oil Dock 14 (SWG-2013-00922) Permit Modification Request
Corpus Christi Ship Channel, Corpus Christi, Nueces County, Texas

Prepared By:

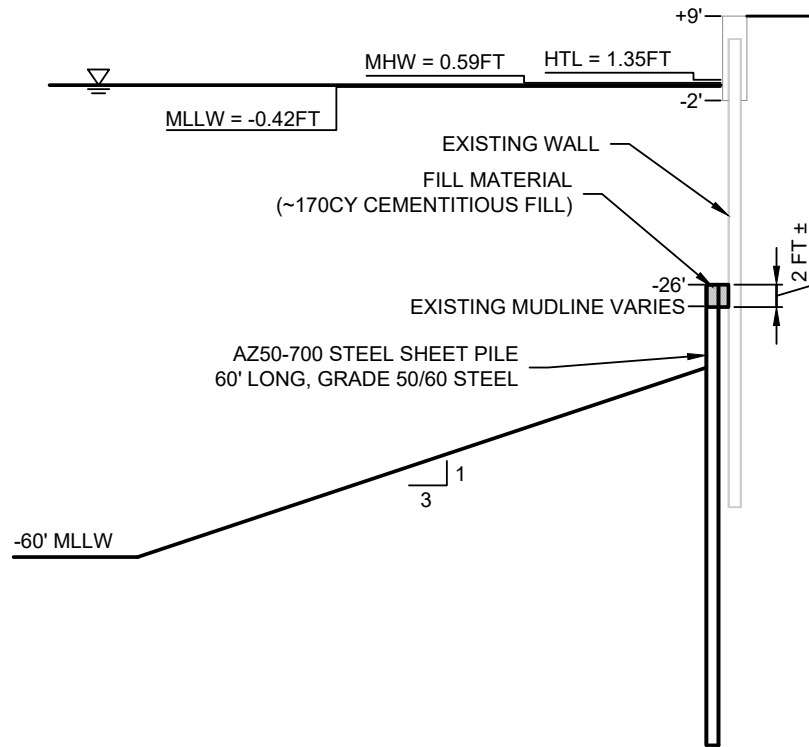
Triton Environmental Solutions, LLC
P.O. Box 1755
Rockport, Texas 78381

Prepared For:

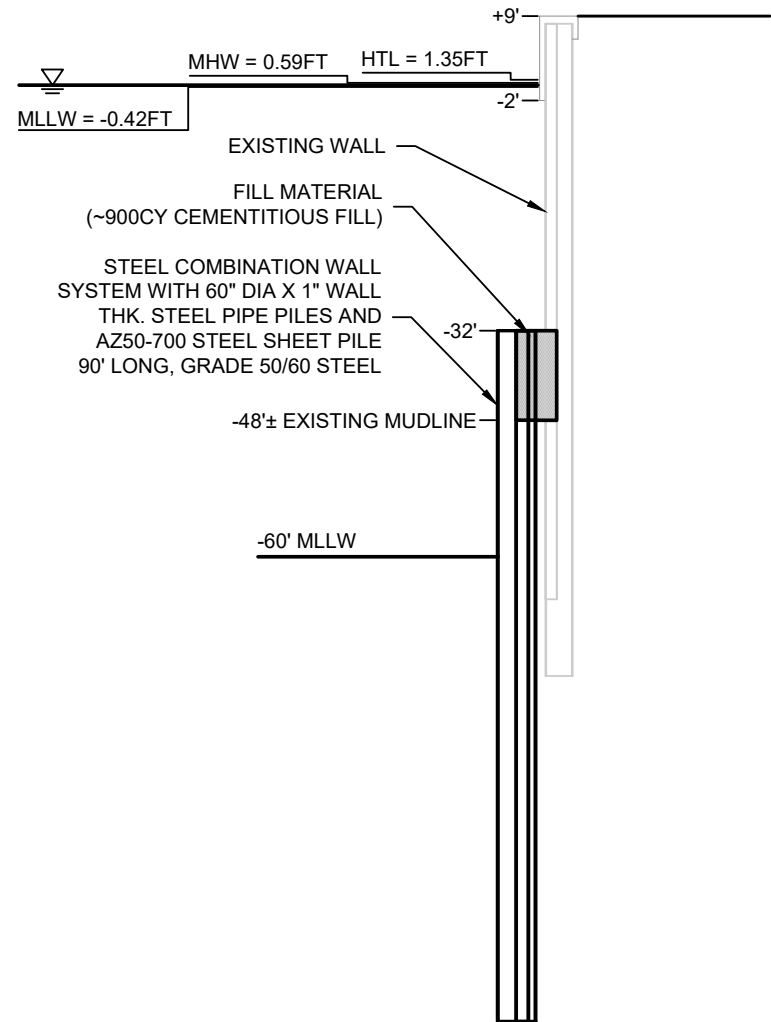
Port of Corpus Christi Authority
400 Harbor Drive
Corpus Christi, Texas 78401

Map Notes:

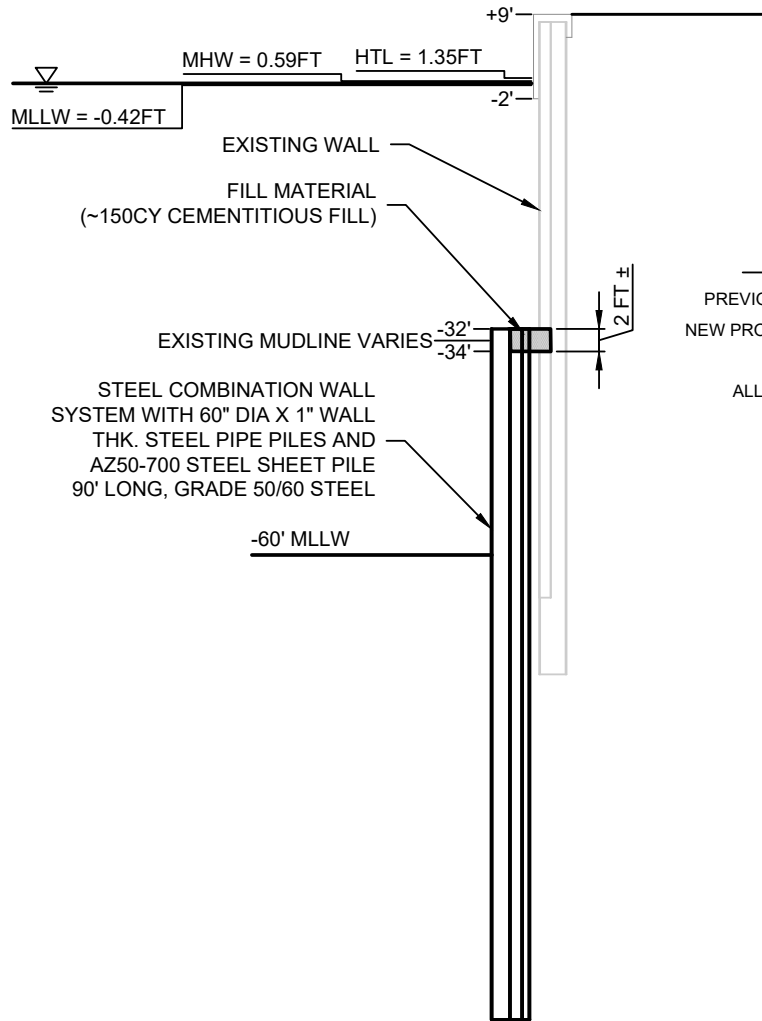
For planning and permitting only, not for construction.
Base Map Source: ESRI Light Gray Canvas base imagery.
DMPA data obtained from USACE Geospatial Database online.
Map Preparation Date: 12/20/24 (SP).



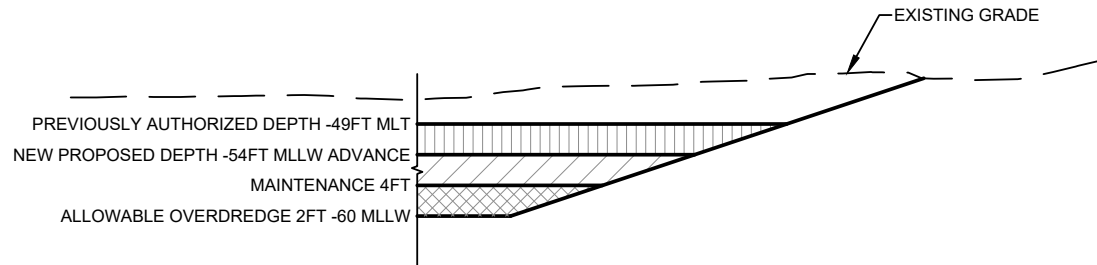
TYPICAL SECTION - SHEET PILE
SCALE: N.T.S.



TYPICAL SECTION - COMBINATION WALL 1
SCALE: N.T.S.



TYPICAL SECTION - COMBINATION WALL 2
SCALE: N.T.S.



DREDGE VOLUMES	
PROPOSED DREDGING VOLUME	72,000 CU. YDS.
ADVANCED MAINTENANCE VOLUME	46,000 CU. YDS.
OVERDEPTH VOLUME	22,000 CU. YDS.
TOTAL	140,000 CU. YDS.

TYPICAL SECTION - BERTH DEEPENING
SCALE: N.T.S.